

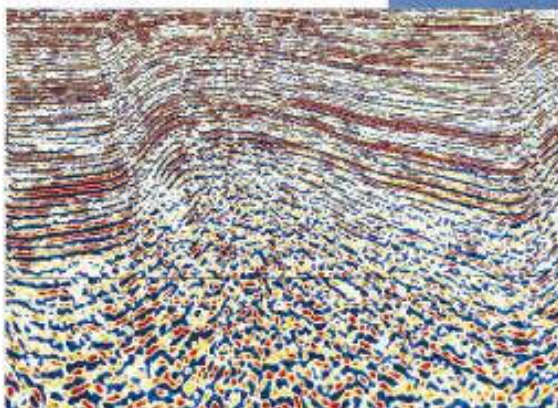


DISTRIBUTED BY IRIS Instruments

## StrataView R<sup>TM</sup>

### Exploration Seismograph

- 24 Bit Result Works Best in Noisy Areas and Lets You See Deeper
  - Ideal For Reflection, Refraction, Marine, VSP, Downhole and Tomography Surveys
- Menu System Is Easy To Learn and Easy to Remember - Spend Time Working, Not Learning
  - 14 Khz Bandwidth Yields Highest Resolution For Detailed Surveys
  - Built-In Analysis Software Provides Quality Control Tools for Refraction and Reflection Surveys
  - Real-Time Hardware Correlator Lets You Use Vibroseis or Inexpensive Pseudo-Random Sources With No Waiting
- 12 to 72 Channels, Expandable As Systems Up To 600



*Folded sediments imaged using the StrataView seismograph. Data courtesy of Geological Survey of Japan, acquired by Nakkō Exploration and Development Co., Ltd.*

#### Applications:

- Refraction Surveys: depth to bedrock, rippability, finding water, aggregate exploration, building site suitability, horizontal drill guidance
- Reflection Surveys: locating faults and fractures, oil, gas and coal exploration, economic minerals
- Teaching and Research
- Marine Surveys for hydrocarbon exploration and engineering studies
- Downhole and Tomography Surveys

**Configurations:**



Single Box 12 to 72 Channel Portable



Multiple Box Portable System Up To 600 Channels



Single or Multiple StrataView's Operated from PC Based CNT-1 NT Controller

**Specifications:\***

**A/D Conversion:** 24 bit A/D process using 32 kHz over sampling, digital anti-alias and decimation to user selected sample rate.

**Dynamic Range:** 138 dB theoretical, 113 dB measured @ 2 ms, 3 to 150 Hz.

**Distortion:** 0.006% @ 2 ms, 3 to 150 Hz.

**Bandwidth:** 3.0 Hz to 14 kHz, 1Hz optional.

**Common Mode Rejection:** > -90 dB @ < 100 Hz.

**Crosstalk:** -82 dB @ 24 Hz.

**Noise Floor:** 0.2 uV, RFI @ 2 ms, 3 to 150 Hz.

**Trigger Accuracy:** 1 microsecond.

**Maximum Input Signal:** 300 mV, P-P.

**Input Impedance:** 20 kOhm, 0.02 uF.

**Preamp Gains:** 36 dB, followed by 24 dB floating point, 2 stage amplifier.

**Sample Interval:** 0.032, 0.064, 0.128, 0.25, 0.5, 1.0, 2.0 ms.

**Record Lengths:** 24,000 samples per channel for 12 or 24 channels; 12,000 samples per channel for 36 channels or more.

**Protrigger Data:** Up to 4056 samples.

**Stacker:** Full 32 Bit.

**Correlator:** Hardware full precision correlator. Operates either before or after stack.

**Automatic Gain Control:** Digital AOC with user adjustable window. Display only - does not affect raw data.

**Acquisition and Display Filters:**

**Low Cut:** CUT, 10, 15, 25, 35, 50, 70, 100, 140, 200, 280, 400 Hz, 24 or 48 dB/Octave, Butterworth.

**Notch:** OUT, 50, 60, 150, 180 Hz, with the -50 dB rejection bandwidth within 2% of center frequency.

**High Cut:** OUT, 250, 500 or 1000 Hz, 24 or 48 dB/Octave.

**Custom:** Other frequencies available at additional charge. (Display filters do not affect data)

**Anti-alias Filters:** Digital, automatically selected to correspond to sample rate. Corner frequency is down 80 dB at Nyquist for all sample rates above 16 kHz, down -74 dB at 16 kHz and limited only by 2 pole analog filter at 32 kHz.

**Roll Along:** Any number of channels rolled through existing channels.

**Number of Channels:** 12 to 72 channels per 12-V portable module. Modules can be connected to form systems of up to 600 channels, all controlled from the keypad of one system. Several StrataView modules can also be controlled by a separate PC based computer using Geometrics CNT-1 software for high cycle time applications. Discuss your requirements with the factory.

**Line Testing:** Real-time full waveform noise monitor.

**Display:** Each StrataView has a large, daylight visible 640x480 VGA compatible LCD with 15 x 20 cm viewing area, backlit for night operation.

**External Controllers:** PC based Windows NT controllers for land, marine, VSP and tomographic operations. Ask for separate data sheet.

**Data Formats:** StrataView seismograph writes SEG-2 to disk. A utility program is included that writes tape in SEG-2 or SEG-Y from data stored on disk. External CNT-1 controller writes SEG-2, SEG-D or SEG-Y in real time.

**Data Storage:** Internal hard drive or DAT, DLT, Exabyte, 3480, 3490, 3590 or other external SCSI device.

**Plotters:** Built-in four inch (11 cm) wide plotter.

**Triggering:** Positive, negative or contact closure, software adjustable threshold.

**Delay:** 0 to 9999 ms in 1 ms increments.

**Survey Geometry:** Stores user definable shot, geophone locations using flexible coordinate system.

**Power Consumption:** 30 W plus 1.0 W per channel.

**Environmental:** -10 to 40 degrees C. Operates in light rain.

**Mating Connectors:** Cannon NK-27-21C for 12 and 24 channels, Bendix P106-24-61S(SR) connectors for larger systems. Custom configurations available.

**Data Processing and Interpretation:** Contact the factory for a complete list of reflection, refraction, VSP, tomography and other processing and analysis software.

\*Tests results are 'typical', performed at 25 C.



**IRIS Instruments**

1 avenue Buffon, BP 6007, 45060 Orléans Cedex, France

Phone: + 33 2 38 63 81 00 - Fax : + 33 2 38 63 81 82

E-mail: [irisins@attglobal.net](mailto:irisins@attglobal.net) - Web site: [www.iris-instruments.com](http://www.iris-instruments.com)